



Experience care-free independent living

Benet Place of Harmony Hill is an independent senior living community. Relax as you enjoy care-free, zero-maintenance living. At your new home, you will appreciate nutritious meals, activities, friendships, prayer and peacefulness.



Pet-Friendly Campus



Beautiful Courtyards & Gardens



Daily Activities & Fellowship

“
Moving to Benet Place wasn't about giving up my home or getting older, it was letting go of the extra worries so that I could enjoy life.
”

Join our community!

Call to schedule a tour today.



← *SCAN*

to learn more about our community at The Village!

The Village



JOIN OUR COMMUNITY

The Basics:

- Furnished Appliances
- Hearty Noon Meal Every Day
- Afternoon Snack & Coffee Socials
- Utilities
- Basic Cable
- Community Dining Room
- Wi-Fi (in dining room)
- Lawn Care & Snow Removal
- Weekly Light Housekeeping
- Interior USPS Mailboxes
- Off-street Parking
- Weekly Activities
- General upkeep & maintenance

What Sets Us Apart!

- Expansive Green Spaces with Beautiful Views
- Outdoor Sitting Areas
- Walking Trails
- Community Garden
- Common Courtyard
- Fire pit for Socializing
- Personal Secure Storage
- Pet Friendly
- Salon Service
- 1,400 sq. ft. Activity & Exercise Area
- Lending Library
- Attached & Detached Garages
- In-house Chapel
- On Campus Therapy
- Priority to The Village Senior Living Community



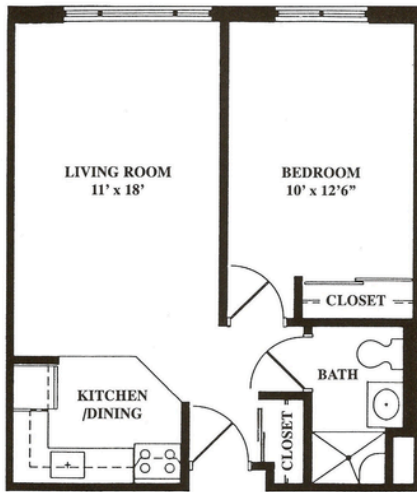
**Where community is built and
where living continues!**

Floorplans



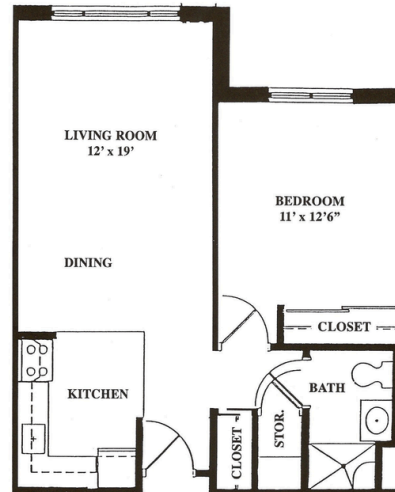
Your New Home to Fit Your Needs

A



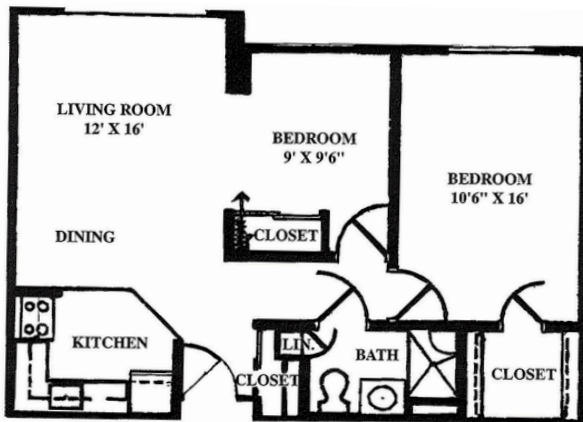
One Bedroom / One Bathroom
533 sq. ft.

C



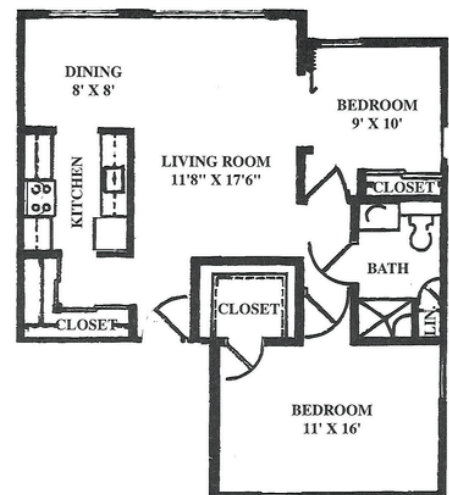
One Bedroom / One Bathroom
625 sq. ft.

D



Two Bedroom / One Bathroom
725 sq. ft.

E



Two Bedroom / 1 Bathroom
863 sq. ft.



Compare YOUR CURRENT LIFESTYLE COSTS

Mortgage / Rent	\$
Home / Renter's Insurance	\$
Property Taxes	\$
Utilities	\$
Lawn Care	\$
Snow Removal	\$
24-Hour Security	\$

Appliances	\$
Housekeeping	\$
Home Maintenance / Repairs	\$
Activities / Entertainment	\$
Daily Noon Meal	\$
Fitness Membership	\$
Basic Cable	\$

To Our PEACE OF MIND, ZERO-MAINTENANCE LIVING

APARTMENT	SQUARE FOOTAGE	MONTHLY FEE
A QUAIN - 1 BEDROOM / 1 BATHROOM	533	CALL FOR A TOUR
C LARGE - 1 BEDROOM / 1 BATHROOM	625	CALL FOR A TOUR
D COURTYARD - 2 BEDROOM / 1 BATHROOM	725	CALL FOR A TOUR
E WEST VIEW - 2 BEDROOM / 1 BATHROOM	863	CALL FOR A TOUR
ADDITIONAL PERSON SERVICES FEE		\$400.00

DEPOSIT / FEES:

Administration Processing Fee.....	\$150.00
Security Deposit.....	Equal to One Month Rent
One-time, Non-refundable Pet Fee (per pet/per apt.)*.....	\$700.00
Monthly Garage Parking (Unattached)*.....	\$75.00
Monthly Garage Parking (Attached/Heated)*.....	\$100.00
Unit Transfer Fee.....	\$1,000.00

**If Applicable*

Rates effective 5/1/2024

